

Prosigna.

BREAST CANCER ASSAY

2nd generation test
that more comprehensively
informs treatment decisions.



CE-IVD MARKED
GUIDELINES
RECOMMENDED

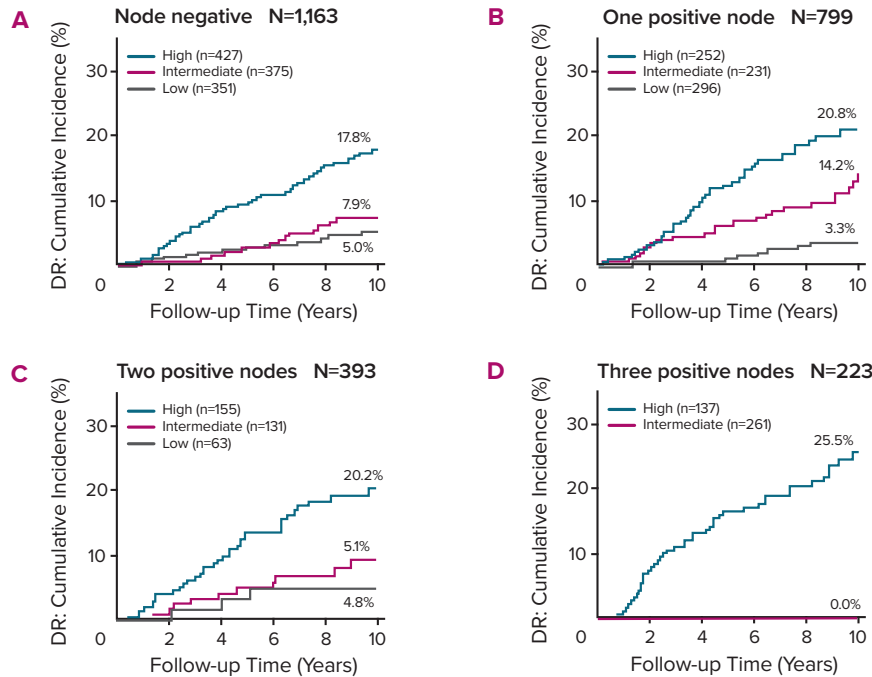
**More Accurate
Prognostic
Score**

**Intrinsic
Subtype
Identified**

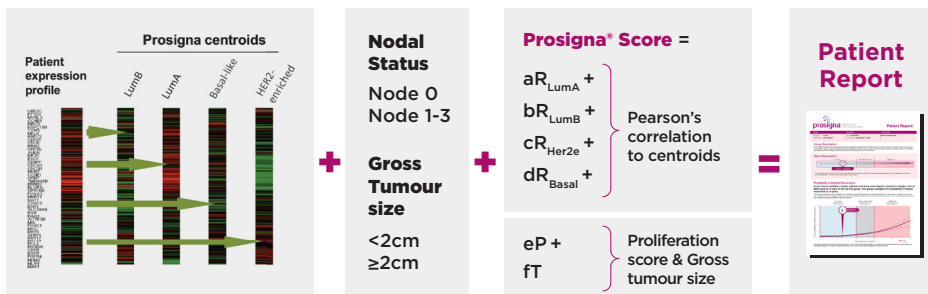
**Clinico-
pathological
Factors
Integrated**

Prosigna® more accurately identifies the low-risk group with better outcomes and the high-risk group with worse outcomes.¹

Identification of low-risk group in Danish (DBCG) cohort real-world setting.²

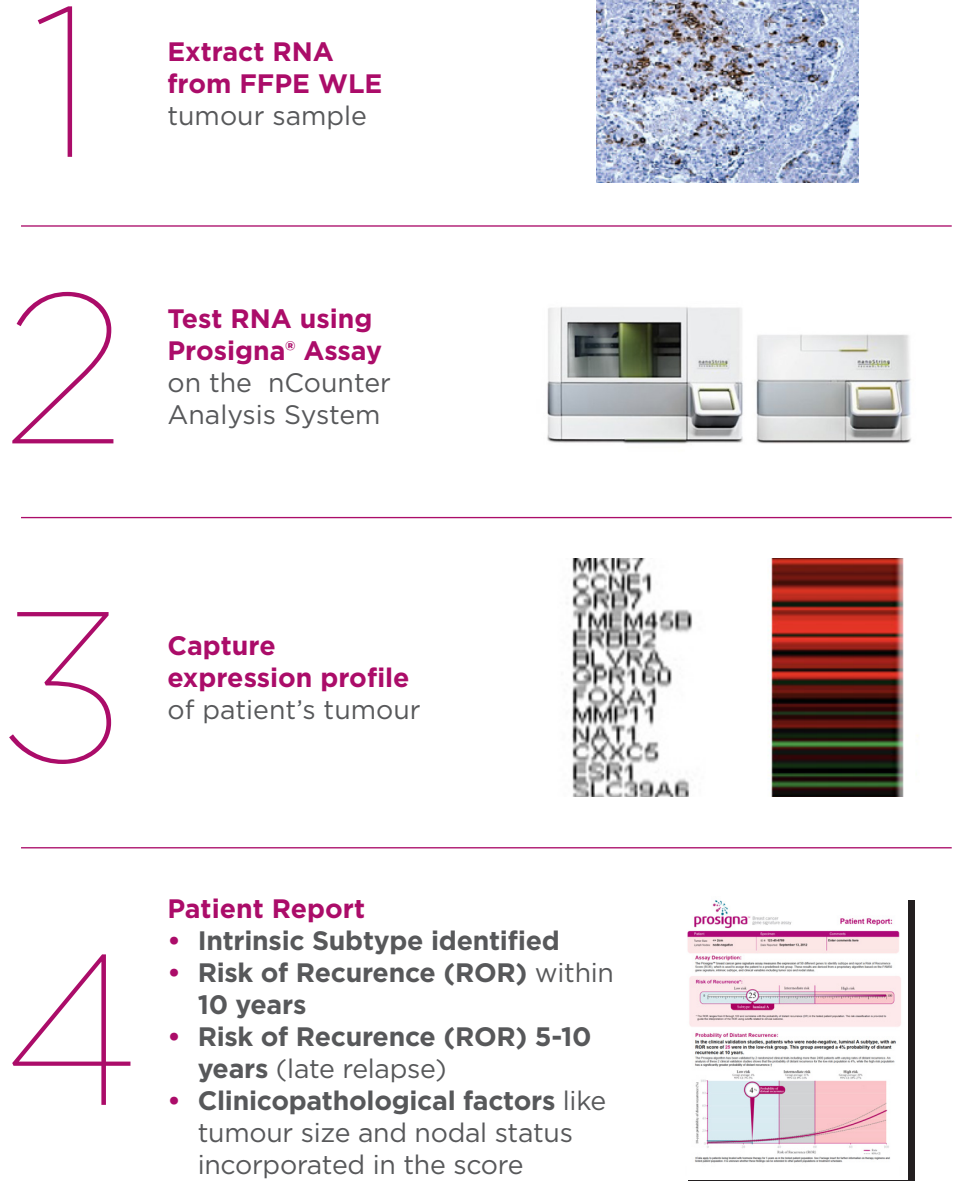


Clinically validated algorithm generates a Prosigna® score for each patient.



DBCG: Danish Breast Cancer Cooperative Group; DR: distant recurrence.

How does the Prosigna® Assay work?



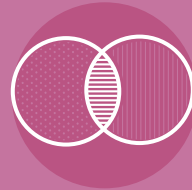
FFPE: formalin fixed paraffin embedded tissue; RNA: ribonucleic acid; WLE: wide local excision.

More **comprehensive information**
for better **treatment decisions.**

Prosigna[®]
BREAST CANCER ASSAY



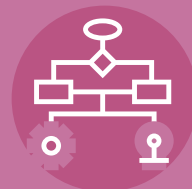
Provides more accurate prognosis which is the **foundation of treatment recommendations.**¹



Prosigna[®] combines **tumour gene expression and clinico-pathological factors** in a single 10-year Risk of distant Recurrence (ROR) score.^{3,4}



The only breast cancer prognostic test identifying the **four PAM50 molecular subtypes.**



Easy access to local testing with **faster turnaround times.**

1. Sestak I, *et al.* JAMA Oncol 2018;4(4):545-553
2. Laenkhölm AV, *et al.* J Clin Oncol 2018;36(8):735-740
3. Kos Z & Nielsen TO. Breast Cancer Res 2014;16(4):103
4. Alexandre M, *et al.* Cancer Manag Res 2019;11:10353-10373